



# Mission



Serve the University of Michigan and embody its mission through rugby competition and community

*Soiled Meat and Sand est. 1959*

# A Note from the President



To the UMRFC Community,

Having taken on this presidential role my Sophomore year after only a single competitive season and still uncertain of the path Michigan Rugby would send me down, I can only begin to express how thankful I am for this opportunity to have been slingshotted into such a cohesive, organized unit of an athletic program. The success of this year can truly be attributed to 63 years of unrelenting passion.

The first key to success and long term growth is developing strong administrative foundations. To attract college athletes, our public image needs to be spotless and professional. To take ourselves seriously as a program, we need to be financially accurate and logistically flawless. To keep into perspective the larger image of what we do and who we are, we need to create a brotherhood deeper than the one shown on the field, and we need to aid the community as best we can. This year, the introduction of Non-Player Administrators has allowed us to harness the vast range of skills of the greater student body and build these foundations. Without taking away the opportunity for players to use non-athletic skills to benefit the team, NPAs have taken administrative stress off players and allowed the team to focus on on-field improvement.

And that we have. With only a small handful of players ever having suited up for Michigan in top side matches before this past Fall season, placing 5th in the Big Ten in 15s and 4th in 7s shows how poised the team was to give a supreme effort. After a very developmental 15s season, this past competitive year can be highlighted with Spring 7s wins versus Notre Dame and varsity program Nazareth College. The supreme effort shown at CRC to end the season energized the team and has carried through this summer off-season. The Wolverines are determined to succeed this Fall season.

Soiled Meat and Sand,

Thomas Hendricks // President, Michigan Rugby // Stephen M. Ross School of Business Class of 2024

*Team: My actions advance our shared goals.*

# 2022 Chief Officer Board



**Thomas Hendricks**  
President



**Luke Boll**  
Vice President



**George Janke**  
Chief Publicity Officer



**Braden Loughnane**  
Chief Financial Officer

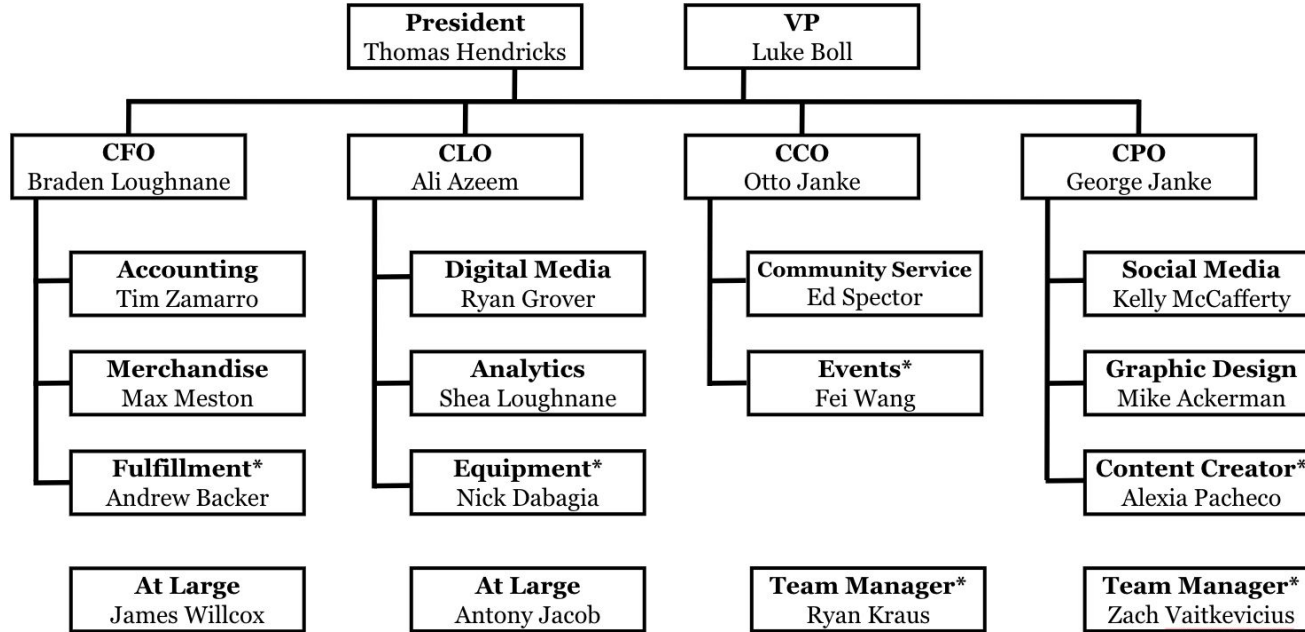


**Otto Janke**  
Chief Community Officer



**Ali Azeem**  
Chief Logistics Officer

# Administrative Board Structure



**\*Non-Officer Positions**

*Leaders: My actions inspire others to act.*

# Introduction of Non-Player Administration

The introduction of NPAs to the team has given us the opportunity to expand faster than ever. Letting players focus on playing, and providing professional development opportunities to UMich students is a win-win!



## THE TEAM:

Ali Azeem - Chief Logistics Officer

Kelly McCafferty - Social Media Officer

Alexia Pacheco - Content Creator

Ryan Kraus - Team Manager

Zach Vaitkevicius - Team Manager

Fei Wang - Team Manager/Events

*Best: My actions maximize the moment's resources.*

# Fall 15s Performance



With 60 players,  
UMRFC was able to  
field three sides.

The top-side finished  
5th in the Big Ten.



*See p. 22 for our Fall 2022 schedule.*

# Spring 7s Performance



A 4th Place finish in the Big Ten earned Michigan a 5 seed at the Collegiate Rugby Championship

The Wolverines placed 27th in the nation at the CRC.



*The Sues won the 2022 Intrasquads Tournament.*

# Spring Tour



In Arizona and Southern California, UMRFC competed against Arizona State, trained at the Chula Vista Olympic Training Center, hiked in Joshua Tree National Park, and connected with the LA alumni.



*Nate Fisher was UMRFC's tour manager.*

# Off-Season Growth



Michigan ruggers logged over 1500 hours of individual work in the winter and summer off-season.

13 players are continuing to develop their skills with men's clubs over the summer.



*UMRFC's fall season starts with two-a-days on August 15.*

# Player Demographics (August 2022)

**17% Freshmen**  
**23% Sophomores**  
**34% Juniors**  
**26% Seniors**

**31%**  
of players had  
played rugby  
before college

**3.58**  
Average GPA

**70%**  
Out-Of-State  
Players

**14**  
States  
Represented

**90%**  
of players were  
multi-sport  
athletes in high  
school

*Since the data is as of August, the freshman class is only partially filled.*

- Polar Plunge for Special Olympics Michigan
- Walk for Alzheimer's
- Recurring blood donations



Upcoming fall:

- Parseghian Cup participation
- Maize Mile



*While Covid has limited our traditional service opportunities, we've still found ways to help out.*

# A Note from the Head Coach



Hello, Michigan Rugby!

The return of competitive rugby this past year was such a memorable experience. The wins and losses, the relationships forged; nothing can replace the development experienced on a rugby team, especially when compared to the limitations during the height of the pandemic.

And now, a year on, we find ourselves with new expectations for the fall. Our returning group and incoming freshmen naturally have more experience than last year's team. We have "a trunk full of new tricks", and a fun group to employ them. It's exciting to think of the moments they'll create on the field, what they'll find themselves capable of, and how close they'll grow together.

Our goal is always a Big Ten championship and this year's competition sees the addition of old foe Notre Dame, who we'll face during Olde Blue Weekend, September 22-25. I hope you'll help cheer the Maize and Blue on to victory against the Irish on Friday, September 23rd.

It's this support that is driving the future of our team. **Your generosity has helped the team secure bus travel and continued athletic trainer coverage this fall.** Thank you! The hard work of the Michigan Rugby Foundation, the vision of the Michigan Unrivaled campaign, and closer partnership with the women's team, have all created new opportunities for rugby at Michigan.

Stay in touch and I hope to see many of you soon. Go Blue.

Matt Trenary // Head Coach, Michigan Men's Rugby // [mensrugby@umich.edu](mailto:mensrugby@umich.edu)

*A 2006 alumnus, Coach Trenary is in his second stint as head coach. The relationships formed as a Michigan Rugby player and coach continue to shape his life.*

# 2022-2023 Coaching Staff



**Matt Trenary**  
Head Coach



**Zach Simkins**  
1st Side Backs



**Christian Mentzer**  
S&C / 2nd Side



**Matt Kasten**  
1st Side Backs



**Drew Vecchio**  
2nd Side / Forwards



**Evan Geist**  
Rugby 101 / Forwards



**Mike Renwick**  
Rugby 101 / Forwards



**Max Xie**  
Rugby 101 / Backs



**Carter Lyon**  
Rugby 101 / Backs



**David Caputo**  
Rugby 101 / Backs

*Most of our assistants are unpaid volunteers. We couldn't succeed without them.*

# Player Testimonials



**Nic Granchalek**  
Junior  
Political Science

I started playing rugby at the beginning of last year, however, I always thought I would eventually try the sport. My parents were afraid of football, and my dad always suggested that I play rugby instead. My freshman year I did not play any sports or do anything competitive. When I became a sophomore, I felt like I needed to reintroduce sports into my life and decided I would finally listen to my dad and try rugby. Immediately, I was accepted with open arms despite my lack of experience. On the first day of two-a-days, George Janke immediately came up to me and introduced me to some of the other guys on the team. Potential nicknames for me were thrown out from the start, from then on I knew I would stay with the team. The advice I got from everyone quickly stopped me from running around like a chicken with my head cut off and turned me into a sound player in the most fun sport I have ever played. Both on and off the field everyone pushes each other through challenges and helps each player be the best version of themselves they possibly can. Since then, I have become part of the brotherhood and there is no group of guys I would rather step onto a field with. It is safe to say I have found a family in Michigan Rugby, and for that I am incredibly grateful.



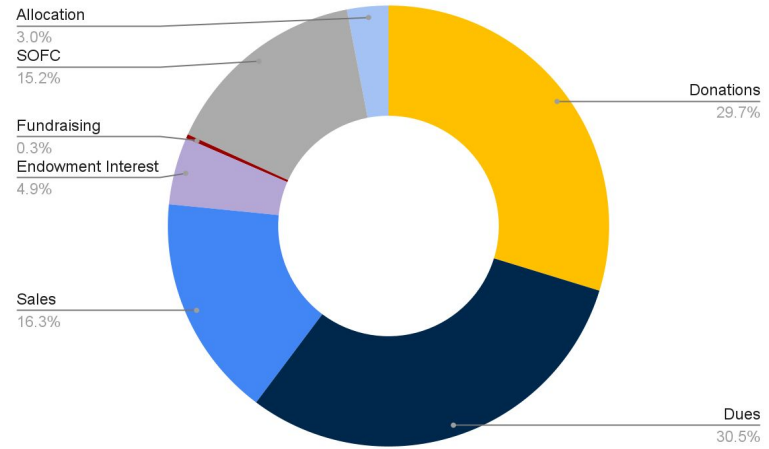
**Grant Sasina**  
Senior  
Data Science

I joined Michigan Rugby because I wanted a community that could push me to better myself. During my 3 years with Michigan Rugby, I have improved tremendously as a rugby player, as a student, as a friend, and as a person thanks to the support this team has provided me. Rugby and life are both dependent on how much work you put in, and Michigan Rugby has taught me how to put in work until I see the results I know I am capable of. Thank you Michigan Rugby, hee haw.

*We have 47 players entering Fall 2022.*

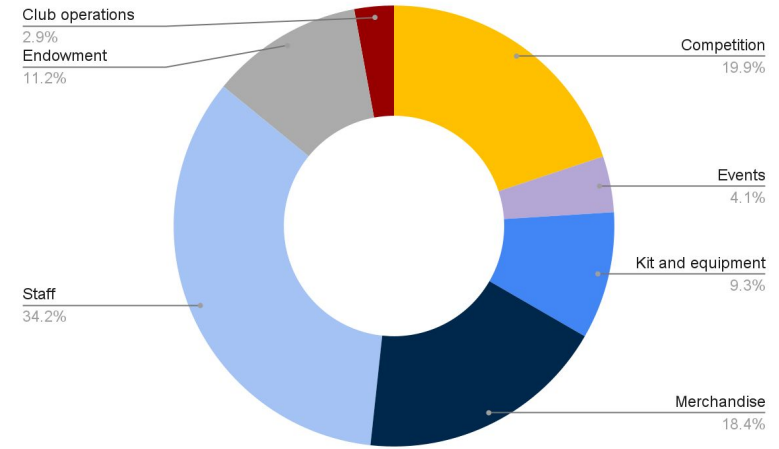
# Financial Summary

## 2021-2022 Revenue: \$125.6k



|   |          |
|---|----------|
| ● Dues.....                                   | \$38,013 |
| ● Donations (incl. University matching).....  | \$37,070 |
| ● Sales (incl. store sales, side orders)..... | \$20,364 |
| ● SOFC.....                                   | \$18,890 |
| ● Endowment Interest.....                     | \$6,161  |
| ● Allocation.....                             | \$3,770  |
| ● Fundraising.....                            | \$378    |

## 2021-2022 Expenses: \$144.0k



|   |          |
|---|----------|
| ● Staff (incl. coaches, trainers).....                | \$49,230 |
| ● Competition (incl. travel, hotels, refs, fees)..... | \$28,640 |
| ● Merchandise (incl. store stock, side orders).....   | \$26,440 |
| ● Endowment contribution.....                         | \$16,128 |
| ● Kit and equipment.....                              | \$13,438 |
| ● Events (incl. home matches, banquets).....          | \$5,917  |
| ● Club operations (incl. stewardship, misc.).....     | \$4,169  |



If you have financial questions or suggestions, please contact Chief Financial Officer Braden Loughnane: [bradendl@umich.edu](mailto:bradendl@umich.edu)

# Thank You Donors!

## Endowment Growth (FY17-FY22)



## Michigan Rugby's endowment surpassed \$200k this year

- Donations for FY 22: \$37,070
- Endowment Gain for FY 22: \$41,176

*“We are incredibly grateful for our network of alumni, parents, and supporters that believe in us and our mission.”*

- President Tommy Hendricks

# Financing the Future

## What has been done:

### Budget Organization and Interpretability

We have consolidated scattered sources of data from the University into a centralized system, allowing us to make informed financial decisions based on expected revenues/expenses and past transactions. This helps to inform our discussions with the MRF and UMRFC as we unify operational and developmental efforts.

### Continued Endowment Growth

Thanks to our donors and the MRF, our endowment continues to grow and is over \$200,000. This increases our yearly endowment interest, lessening dependence on fresh donations. It also gives us more clout within the University, making more ambitious goals more achievable. The endowment is integral to the club's future.

## What we plan on doing:

### Improved Player Support

Michigan Rugby's continued expansion must never lose sight of our primary focus: our student-athletes. Financial support for team travel, subsidized team meals, and athletic training staff present at every game and practice are a few ways we are realizing a truly unrivaled Michigan Rugby experience.

### Learn More

[Michigan Unrivaled](#)

[Michigan Rugby Foundation](#)



*We wouldn't be able to achieve our long-term development goals without the help of the Michigan Rugby Foundation. See p. 19 for more information on the MRF.*

# Our Support Groups

**Michigan Rugby Foundation (MRF)** is a 501(c)(3) nonprofit that provides flexible financial support and strategic guidance to the University of Michigan rugby community.

Over the 2021-2022 school year, MRF...

- Covered trainer costs for both the men and women
- Contributed an additional \$15,000 to the teams
- Advanced the Unrivaled vision
- Facilitated Giving Bluesday donor outreach.

Support MRF through [Amazon Smile](#)

Visit MRF and donate at [michiganrugbyfoundation.org](http://michiganrugbyfoundation.org)



The **Student Advisory Committee (SAC)** is a group of local alumni and supporters that provide guidance to the club, specifically with...

- Navigating relations with the University.
- Solidifying annual and long-term budgets.
- Negotiating coaching contracts.
- Identifying and resolving potential barriers to rugby.
- Refining alumni engagement opportunities.

## Current Members

Karl Seibert

Aaron Dodd

Mike Brooks

Jeff Hagan

Matt Kasten

Lyric Kleber



*Interested in getting involved with MRF? Contact President Wes Farrow at [wes@michiganrugbyfoundation.org](mailto:wes@michiganrugbyfoundation.org)  
Any input for the SAC? Contact [umrfe-sac@umich.edu](mailto:umrfe-sac@umich.edu)*

# How Can You Support?

## Donate

See [mrugby.com/support](https://mrugby.com/support). 100% of your donation goes directly to the club.

## Cheer the team on

Come to Mitchell Field for a home game. It's free!  
Not in town? Watch our live stream at [mrugby.com/livestream](https://mrugby.com/livestream).

## Help with Logistics

It takes a lot of work to keep the club running.  
We need help with post-game meals, photography, home game setup, and more.  
Email [grjanke@umich.com](mailto:grjanke@umich.com).

# A Note from the Captains



**George Janke**  
Senior  
Captain

Greetings to the Michigan Rugby Community,

It's been quite a ride. Both of us came out for the rugby team in August 2019 having never played before. In the moment, we underestimated the value that those first few weeks would have on the rest of our lives. We fell in love with the sport, and we fell in love with the community.

After so-so freshman seasons, the two of us worked our butts off during the coronavirus hiatus. George put on 25 pounds of muscle by the start of junior year, and Braden honed passing skills that are now arguably the best in the Big Ten. We had a hunger to leave an imprint on the program, just as 63 years of alumni had before us.



**Braden Loughnane**  
Senior  
Captain

We are so proud to lead this team in Fall 2022, but we know that this is our greatest challenge yet. We believe in the team that Coach Trenary has built, and we believe in all of the hard work that each of our teammates have logged since April. In particular, it's been inspiring to see our younger teammates attack their training with the same passion that we had in 2019 and 2020. It doesn't go away.

To be Soiled Meat and Sand is to give your all to the team. It's to display valor both on and off the field. It's to make the best of your few short years and to lead others to do the same. That's how we hope you remember us, and that's how we hope you remember Team 64. Go Blue!

# Fall 2022 Schedule

Fall practices began with two-a-days on August 15.

Michigan kicks off the fall season with a home match against Cincinnati.



The final two weeks of the season feature playoffs in the form of semifinals and finals.

Home games are at Mitchell Field, or can be viewed online via live stream.

|         |                   |
|---------|-------------------|
| F 8/26  | Cincinnati        |
| F 9/2   | Western Michigan  |
| F 9/16  | @ Notre Dame      |
| F 9/23  | Notre Dame (OBW)  |
| F 9/30  | @ Ohio State      |
| S 10/8  | @ Maryland        |
| S 10/22 | TBD - Home        |
| F 10/28 | @ Michigan State* |
| S 11/5  | Big Ten Semis     |
| S 11/12 | Big Tens Finals   |

\* Notates Battle for the Mitten!



*On October 28th versus Michigan State the Battle for the Mitten returns!*

# Visit Our Online Store

We're in the process of updating our online store presentation and offerings!

[shop.mrugby.com](http://shop.mrugby.com)



Buy the latest limited edition Michigan Rugby Merchandise and support the club at the same time.

Email [umrfc-store@umich.edu](mailto:umrfc-store@umich.edu) with all questions and suggestions.

Is there an item you want to see? Let us know!

# Stay Up to Date



[University of Michigan Rugby Football Club](#)



[@UMichRugby](#)



[@UMichRugby](#)



[Michigan Rugby](#)



[MRugby.com](#)



^ See our Fall 2022 roster and more

# Thank You Sponsors!

Our club wouldn't be possible without the generous support of our sponsors. You are what allows us to keep performing on the field and have such an impact in our surrounding community!



If you know of an organization interested in sponsoring UMRFC, reach out to [tlhendri@umich.edu](mailto:tlhendri@umich.edu)



Soiled Meat and Sand